

Unit 4, Menin Works, Bond Road, Mitcham, Surrey, CR4 3HG

**LEWIS
&CO**

INDUSTRIAL UNIT TO LET



DESCRIPTION

Menin works is a newly refurbished industrial Unit with high ceilings and large open plan space. It benefits from a large up and over roller shutter door with loading bay and forecourt parking.

- Eaves – 3.37m
- Three Phase electricity
- On site Car parking spaces
- Gated estate with CCTV
- Newly refurbished

ACCOMMODATION

UNIT 4 2,819 SQ FT

LOCATION

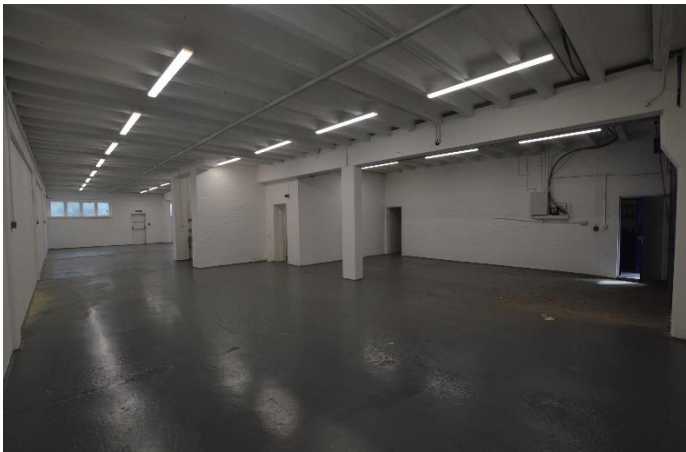
Menin Works is located on the south side of Bond Road just off Western Road (A236) between Colliers Wood and Mitcham.

Menin Works benefits from being in an excellent position for access by road both into and out of central London and is an established business area. Public transport is provided via local buses, Colliers Wood Underground Station (Northern Line) and the Croydon to Wimbledon Tramline.

The property forms part of the main terrace on the estate and is arranged on the ground floor. The accommodation provides an open plan area, with WC.

Unit 4, Menin Works, Bond Road, Mitcham, Surrey, CR4 3HG

**LEWIS
&CO**



LEASE

A new FRI lease for a term to be agreed.

TIMING

Immediate upon completion of legal formalities.

RENT

LET.

RATES

Interested parties are advised to make their own enquiries with the local authority.

EPC

Available on request.

VIEWING

Viewing strictly by prior appointment with the joint sole agents:

Lewis&Co

Alex Lewis MRICS

alex@lewisco.co.uk

+44 (0) 20 3940 5575

+44 (0) 7815 788 825

Claudia Harley BSC (HONS)

claudia@lewisco.co.uk

+44 (0) 20 3940 5561

+44 (0) 7563 393 940

SHW

Alex Gale MRICS

agale@shw.co.uk

+44 (0) 20 8662 2704

+44 (0) 7768 500 304

Sam Baly

sbaly@shw.co.uk

+44 (0) 20 8662 2737

+44 (0) 7961 809 344

MISREPRESENTATIONS ACT: Lewis&Co for themselves and for the vendors/lessors of the property whose agents they are, give notice that: 1. These particulars are set out as a general outline for the guidance of the intended purchasers or lessees, and do not constitute part of, an offer or contract; 2. All descriptions, dimensions, reference to, tenure, tenancies, condition and necessary permissions for the use and occupation, and other details are given without responsibility and any intending purchaser or tenant should not rely on them as statements or representations of fact but must satisfy themselves by inspection or otherwise as to the correctness of each of them; 3. No person in the employment of Lewis&Co has any authority to make or give any representations or warranty in relation to this property.